

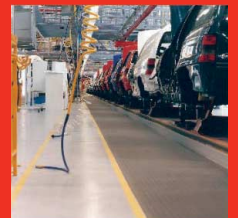
## Industrial Flooring



Food and Drink



Pharmaceutical



Automotive



Aerospace



Electronics



Chemicals

# Floor and Wall Coatings 0-1mm

## Flowseal EPW



Coloured gloss finish water based epoxy hygienic floor coating.



## Flowcoat SF41



High performance, solvent free, chemical resistant, high build epoxy resin coating.



## Peran WW



Coloured gloss finish water based epoxy hygienic wall coating.



# Self Levelling Floor Finishes 2-4mm

## Flowshield SL



Hygienic self smoothing epoxy resin floor finish.



## Flowshield Quartz



Smooth, glossy, self smoothing resin floor finish with a decorative speckled finish.



## Peran ESD SL



Static dissipative hygienic, easy-to-clean, chemical resistant self smoothing epoxy resin floor finish.



# Heavy Duty Floor Toppings 4-8mm

## Mondéco Earth



Hygienic epoxy terrazzo floor finish that contains antimicrobial agents. Aggregate: Granite and flint. Static dissipative grade available.



Blueberry



Coconut



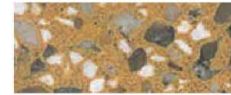
Tangerine



Pomegranate



Kiwi



Peach



Almond



Chilli Pepper

## Peran STB



A hard wearing, decorative epoxy resin floor topping made up of UV stable coloured quartz granules encapsulated in a clear resin binder. Available with matt or gloss finish.



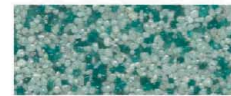
Blue 7200



Cream 7700



Yellow 7400



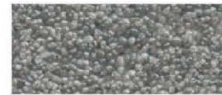
Green 7300



Grey 7100



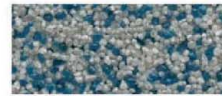
Grey 7120



Grey 7600



Red 7500



Blue 7750



Grey 7770

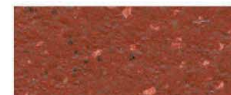
## Flowtex



Heavy duty resin floor topping made up of natural quartz encapsulated in a pigmented resin binder. Available with matt or gloss finish.



Emerald Green 740



Tile Red 637



Yellow 340



Mid Grey 280

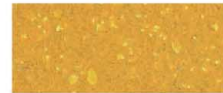
# Seamless Polyurethane Antimicrobial Floor Finishes

2-9mm

## Flowfresh HF



Heavy duty, slip resistant, antimicrobial 6-9mm polyurethane resin floor finish, with high chemical resistance suitable for steam cleaning.



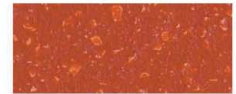
Ochre



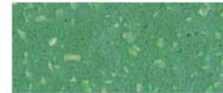
Cream



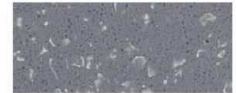
Mustard



Red



Dark Green



Mid Grey

## Flowfresh MF



Heavy duty, smooth, antimicrobial 4mm polyurethane resin floor finish with high chemical resistance. Special colours are available.



Ochre



Cream



Mustard



Red



Dark Green



Mid Grey

# High Speed, High Strength Acrylic Toppings 4mm

## Flowfast Quartz



Heavy duty, fast drying resin floor topping made up of UV stable coloured quartz granules encapsulated in a clear resin binder. Full traffic only 90 minutes from installation.



Yellow 7400



Green 7300



Grey 7100



Grey 7120



Grey 7600



Red 7500



Blue 7750



Grey 7770



## Flowcrete around the world

<b>Argentina</b>	Flowcrete Argentina	Tel: +54 11 4621 2991	Fax: +54 11 4481 1422	Email: <a href="mailto:argentina@flowcrete.com">argentina@flowcrete.com</a>
<b>Australia</b>	Flowcrete Australia	Tel: +61 2 9653 9583	Fax: +61 2 9651 4742	Email: <a href="mailto:australia@flowcrete.com">australia@flowcrete.com</a>
<b>Belgium</b>	Flowcrete Corrosion Protection	Tel: +32 1575 6927	Fax: +32 1575 2894	Email: <a href="mailto:belgium@flowcrete.com">belgium@flowcrete.com</a>
<b>Brazil</b>	Flowcrete South America Ltda	Tel: +55 11 3675 1873	Fax: +55 11 3675 1873	Email: <a href="mailto:brazil@flowcrete.com">brazil@flowcrete.com</a>
<b>China</b>	Flowcrete Shanghai Ltd	Tel: +86 21 6236 0984	Fax: +86 21 6236 0476	Email: <a href="mailto:china@flowcrete.com">china@flowcrete.com</a>
<b>Czech Republic</b>	Flowcrete Czech c/o Techfloor	Tel: +420 553 791 311	Fax: +420 553 791 311	Email: <a href="mailto:czechrep@flowcrete.com">czechrep@flowcrete.com</a>
<b>Denmark</b>	Flowcrete Denmark	Tel: +45 3053 1294	Fax: +45 6440 0039	Email: <a href="mailto:denmark@flowcrete.com">denmark@flowcrete.com</a>
<b>Germany</b>	Flowcrete Germany	Tel: +49 3466 364 370	Fax: +49 3466 364 371	Email: <a href="mailto:germany@flowcrete.com">germany@flowcrete.com</a>
<b>Hong Kong</b>	Flowcrete (Hong Kong) Ltd	Tel: +852 2795 0478	Fax: +852 2795 4842	Email: <a href="mailto:hongkong@flowcrete.com">hongkong@flowcrete.com</a>
<b>Malaysia</b>	Flowcrete Asia Sdn Bhd	Tel: +60 3 6277 9575	Fax: +60 3 6277 4645	Email: <a href="mailto:malaysia@flowcrete.com">malaysia@flowcrete.com</a>
<b>New Zealand</b>	Flowcrete New Zealand c/o Cemix Ltd	Tel: +64 9 8333 480	Fax: +64 9 8333 481	Email: <a href="mailto:newzealand@flowcrete.com">newzealand@flowcrete.com</a>
<b>Norway</b>	Flowcrete Norway AS	Tel: +47 6486 0830	Fax: +47 6486 0831	Email: <a href="mailto:norway@flowcrete.com">norway@flowcrete.com</a>
<b>Poland</b>	Flowcrete Polska Sp. z.o.o.	Tel: +48 22 879 8907	Fax: +48 22 879 8918	Email: <a href="mailto:poland@flowcrete.com">poland@flowcrete.com</a>
<b>Singapore</b>	Flowcrete Singapore Pte Ltd	Tel: +65 6483 5005	Fax: +65 6481 5885	Email: <a href="mailto:singapore@flowcrete.com">singapore@flowcrete.com</a>
<b>South Africa</b>	Flowcrete SA (Pty) Ltd	Tel: +27 31 7018 866	Fax: +27 31 7015 289	Email: <a href="mailto:southafrica@flowcrete.com">southafrica@flowcrete.com</a>
<b>South Korea</b>	Flowcrete Korea	Tel: +822 333 5613	Fax: +822 326 1925	Email: <a href="mailto:southkorea@flowcrete.com">southkorea@flowcrete.com</a>
<b>Sweden</b>	Flowcrete Sweden AB	Tel: +46 435 38630	Fax: +46 435 31498	Email: <a href="mailto:sweden@flowcrete.com">sweden@flowcrete.com</a>
<b>Thailand</b>	Flowcrete Thailand	Tel: +66 2 693 0775	Fax: +66 2 694 3295	Email: <a href="mailto:thailand@flowcrete.com">thailand@flowcrete.com</a>
<b>UAE</b>	Flowcrete Middle East FZCO	Tel: +971 4 881 1016	Fax: +971 4 881 2726	Email: <a href="mailto:uae@flowcrete.com">uae@flowcrete.com</a>
<b>UK</b>	Flowcrete UK Ltd	Tel: +44 (0)1270 753 000	Fax: +44 (0)1270 753 333	Email: <a href="mailto:uk@flowcrete.com">uk@flowcrete.com</a>
<b>USA</b>	Flowcrete North America Inc.	Tel: +1 936 539 6700	Fax: +1 936 539 6701	Email: <a href="mailto:usa@flowcrete.com">usa@flowcrete.com</a>